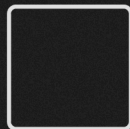
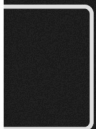
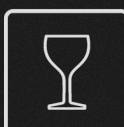
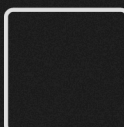
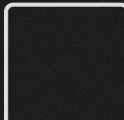
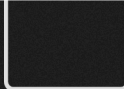
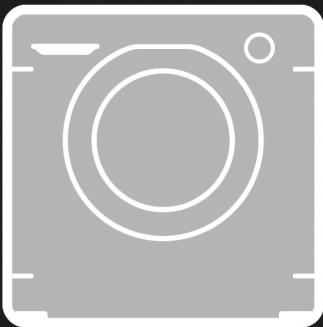
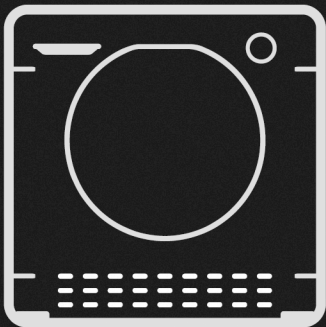
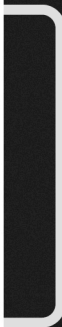
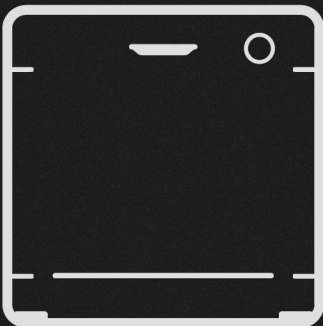
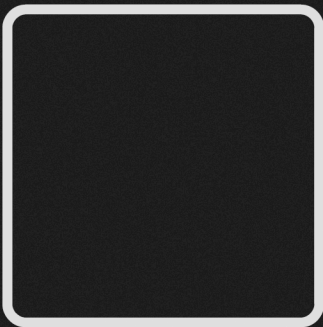
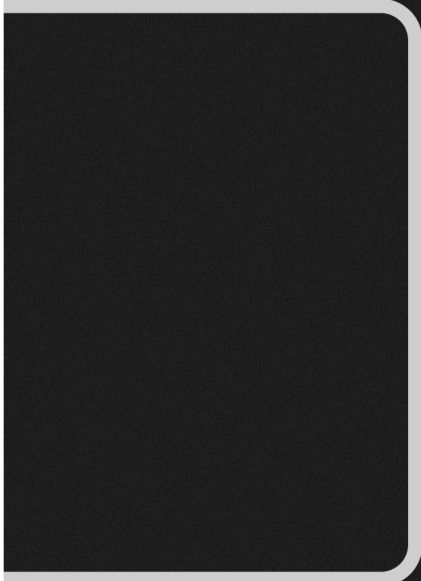
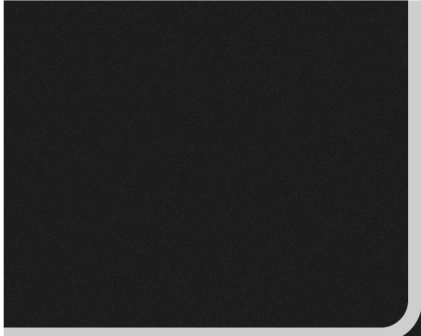




BORN INNOVATIVE



Thank you for choosing a washing machine **Hoover**. We are proud of always offer new innovative products and technologically advanced, with a full range of appliances to ensure concrete support in everyday life.

The complete reading of this booklet will allow a correct and safe use of the equipment and will also give useful advice on the most efficient maintenance.



Only operate the washing machine after carefully reading the instructions. It is advisable to always keep the manual at hand and to keep it carefully for future owners.

It is recommended to check that at the time of delivery the machine is equipped with an instruction booklet, guarantee certificate, service addresses and energy efficiency label. Also check that you have plugs, elbow for drain hose and basin for liquid detergent or bleach (present on some models only). It is recommended that you keep all these components.

Each product is identified by a unique 16-character code, also known as a "serial number", which can be found in the sticker applied on the appliance (porthole area) or in the document envelope inside the product. This code is a sort of specific identity card for the product that will be used to register the product and if it is necessary to contact the Technical Assistance Center **Hoover**.

Environmental indications



This appliance is marked in accordance with the European Directive 2012/19 / EU on Waste from Equipment Electric and Electronics (WEEE).

WEEE contains both polluting substances (which can have a very heavy negative impact on the environment) and raw materials (which can be reused). It is therefore necessary to subject WEEE to specific treatment operations, to safely remove and dispose of pollutants and extract and recycle raw materials. Every citizen can play a decisive role in ensuring that WEEE does not become an environmental problem; just follow a few simple rules:

there WEEE should never be thrown into the undifferentiated garbage;

there WEEE must be delivered to the Centers Collection (also called ecological islands, recycling shops, ecological platforms ...) set up by the Municipalities or by the urban hygiene companies; In many locations, the home collection service for bulky WEEE is also carried out.

In many countries, when a new appliance is purchased, the WEEE can be handed over to the retailer, who is required to collect it free of charge ("one-on-one" collection) as long as the new appliance is of the same type and performs the same functions as the one. made.

Index

- 1. GENERAL SAFETY RULES**
- 2. INSTALLATION**
- 3. PRACTICAL ADVICE**
- 4. CLEANING AND ROUTINE MAINTENANCE**
- 5. QUICK USER GUIDE**
- 6. COMMANDS AND PROGRAMS**
- 7. DRYING CYCLE**
- 8. AUTOMATIC WASHING / DRYING CYCLE**
- 9. TROUBLESHOOTING AND WARRANTY**

1. GENERAL SAFETY RULES

there This appliance is intended for use in domestic and similar environments such as:

- refreshment areas of shops, offices or other work environments;
- in the agritourism;
- by customers of hotels, motels or other similar residential areas;
- in bed & breakfasts.

Any use other than that typical of the domestic environment, such as professional use by experts or trained people, is also excluded from the environments described above. A use that is not consistent with that reported can reduce the life of the product and can invalidate the manufacturer's warranty. Any damage to the appliance or to anything else, deriving from use other than domestic use (even when the appliance is installed in a domestic environment) will not be admitted by the manufacturer in its legal office.

there This appliance can be used by children aged 8 and over and by people with reduced physical, sensory or mental abilities or with a lack of experience and knowledge as long as they are supervised or instructed on the safe use of the appliance. appliance and that they understand the dangers of its use. Prevent children from playing

with the washing machine or who take care of its cleaning and maintenance without supervision.

there Children should be supervised to ensure that they do not play with the appliance.

there Children under the age of 3 must be kept away from the machine unless continuously supervised.

there If the power supply cable is damaged, it must be replaced by a special cable or assembly, available from the manufacturer or its technical assistance service.

there Use only the inlet hose supplied with the appliance for connection to the water mains. Old pipes must not be reused.

there The water pressure must be between a minimum of 0.05 MPa and a maximum of 0.8 Mpa.

there Make sure that no carpet obstructs the base of the washing machine or the ventilation ducts.

there The final part of a washer dryer cycle takes place without heat (cooling cycle) to make sure the items undergo a

temperature that ensures that they will not be damaged.



ATTENTION:

Do not **stop** never there
**washer-dryer before the end
of the drying cycle, unless
all items are quickly
removed and spread out to
dissipate heat.**

there After installation, the appliance must be positioned so that the plug is reachable.

there The appliance must not be installed behind a lockable door, a sliding door or a door with a hinge on the opposite side to that of the washer-dryer which would prevent complete opening the door.

there The maximum load capacity of dry laundry differs depending on the model (refer to the dashboard).

there The washer-dryer must not be used if chemicals have been used for washing.

there Do not dry unwashed items in the washer-dryer.

there It is advisable that garments soiled with substances such as cooking oil, acetone, alcohol, petrol, kerosene, stain removers, turpentine, wax and other substances

to remove it are washed in hot water with a larger quantity of detergent before drying them in the washer-dryer.

there Items such as foam rubber (latex foam), shower caps, waterproof textiles, items with a rubber side, and clothes or pillows that have latex foam parts should not be dried in the washer dryer.

there Fabric softeners or similar products should be used in accordance with the instructions for fabric softeners.

there Garments soiled with oil can spontaneously burn when exposed to heat sources such as that of a dryer. The garments become hot, causing an oil oxidation process that develops heat. If the heat cannot dissipate, the clothes become hot enough to ignite the fire.

there If you cannot avoid using the dryer for fabrics containing vegetable residues, cooking oils or hair care products, these items must be washed beforehand in hot water with special detergents. This operation reduces, but does not eliminate, the danger.

there Remove all items from pockets such as lighters and matches.

there For further information on the product or to consult the technical data sheet, refer to the manufacturer's website.

Electrical connection and safety requirements

there The electrical data (power supply voltage and absorbed power) are shown on the data plate affixed to the product.

there Make sure that the electrical system is grounded, that the power outlet complies with national regulations, and that the power plug and socket match.

there The use of adapters, sockets multiple and / or extensions strongly not recommended.

there Before cleaning and maintaining the washing machine, unplug it and turn off the water tap.

there Do not pull the cable power supply or the appliance itself to remove the plug from the socket.

there Before opening the door, make sure there is no water in the drum.



ATTENTION:
during washing, the water can reach very high temperatures.

there Do not to leave there washing machine exposed to rain, sun or other atmospheric agents.

there If you are moving, do not lift the washing machine by the knobs or the detergent drawer; during transportation, not never place the door on the trolley. It is recommended that two people lift the washing machine.

there In any case of breakdown and / or malfunction, we recommend that you turn off the washing machine, close the water tap and do not tamper with the appliance. Immediately contact the Technical Assistance Center, requesting only original spare parts. Failure to comply with the above can compromise the safety of the appliance.

And

2. INSTALLATION

there Cut the hose clamps, taking care not to damage the hose and the electric cable.

there Unscrew the **2** or **4** screws (**TO**) on the back and remove the **2** or **4** spacers (**B**) as in **Figure 1**.

there Close i **2** or **4** holes using the caps contained in the instruction bag.

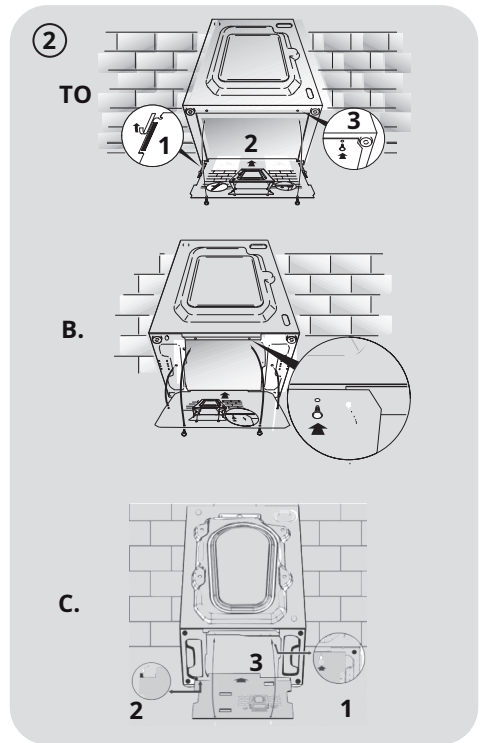
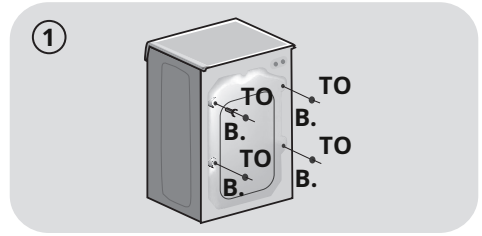
there If the washing machine is **built-in**, after cutting the hose clamps, unscrew the **3** or **4** screws (**TO**) and remove the **3** or **4** spacers (**B**).

there In some models, **1** or more spacers will fall inside the machine: tilt the washing machine forward to remove them. Close the holes using the caps contained in the envelope.



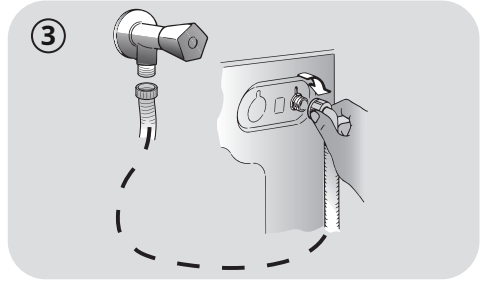
ATTENTION:
do not leave the packaging elements within reach of children.

there Apply the polywave sheet to the bottom as shown in **Figure 2** (depending on the model, consider the version **A**, **B** or **C**).




Hydraulic connection

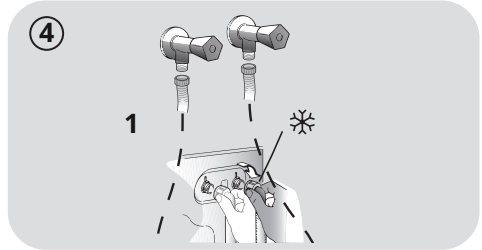
there Connect the water hose to the tap (fig. 3) using only the tube supplied with the appliance (the old tubes must not be reused).



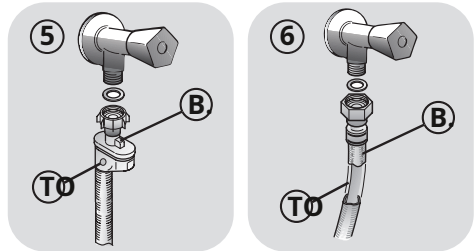
there In some models, they may be has one or more of the following characteristics:

there **HOT & COLD (fig. 4):** predisposition to connection to the water mains with hot and cold water for greater savings energetic.

Connect the hose gray at the tap cold water  and the red one at hot water tap. In any case, the machine can also be connected to cold water only: in this case, the start of some programs will be delayed by a few minutes.

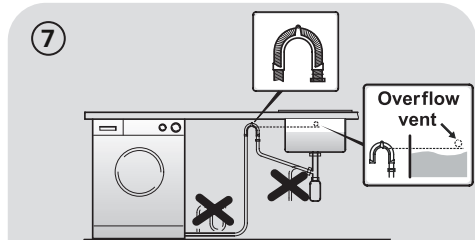


there **AQUASTOP (fig. 5):** positioned device on the inlet hose that blocks the water flow if the hose deteriorates; in this case, a red mark will appear in the window "TO" and it will be necessary to replace the tube. To unscrew the ring nut, press the anti-unscrewing device "B".



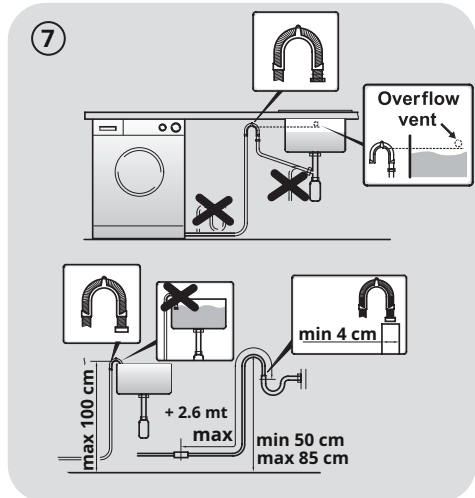
there **AQUAPROTECT - INLET PIPE WITH PROTECTION (fig. 6):** in case of water leakage from the internal primary pipe "TO",

The transparent containment sheath "B". Will contain the water, allowing you to finish the wash. At the end of the cycle, replace the inlet hose by contacting the Technical Assistance Center.



Positioning

there Move the washing machine to the wall, doing make sure that the hose has no bends or bottlenecks and connect the drain hose to the edge of the tub or, preferably, to a fixed drain with a minimum height of 50 cm and a diameter greater than the washing machine hose (fig. 7).



there Level the machine by acting on the feet as in **figure 8**:
to. turn the nut clockwise to release the screw;

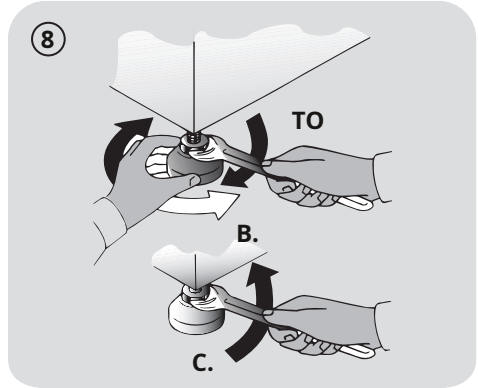
- b.** rotate the foot and let it rise or fall until it adheres to the ground;
- c.** finally lock the foot, by screwing the nut, until it adheres to the bottom of the washing machine.

there Insert the plug.



ATTENTION:


should it be necessary to replace the power cable, we recommend call the Technical Assistance Center.

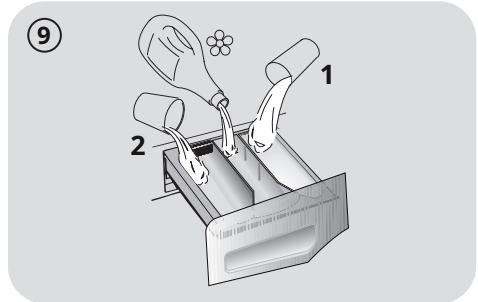


Detergent drawer

The detergent drawer is divided into 3 compartments as shown in **figure 9**:

there **tray "1"**: for the detergent pre-wash;

there **tray " 2"** : for special additives, fabric softeners, starching perfumes, etc;



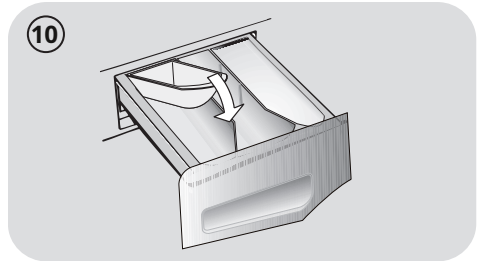
ATTENTION:

put only products liquids; there washing machine is prepared upon withdrawal automatic additives in each cycle during the last rinse.

there **tray "2"**: for washing detergent.

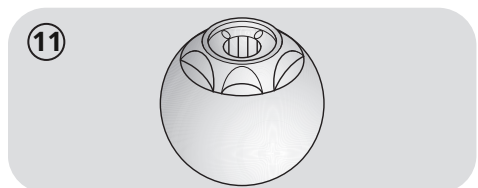
In some models there is also the **basin for liquid detergent (fig. 10).**

To use it, insert it into the **tray " 2 "**. In this way, the liquid detergent will only go into the drum at the right time. This bowl is also useful if you want to bleach, choosing the "Rinses" program.



ATTENTION:

some detergents are difficult to remove. In this case it is advisable to use a special container to be placed in the basket (example in figure 11).



3. PRACTICAL ADVICE

Information on the load

ATTENTION: when selecting the laundry, make sure:

- to have eliminated metal objects, such as clips, pins, coins, from the linen;
- to have buttoned pillow cases, closed the zippers, tied loose straps and long dressing gown ribbons;
- that the sliding rollers have also been removed from the curtains;
- to have carefully observed the indications of the fabrics on the labels;
- to have removed any persistent stains with a suitable detergent.

there If carpets need to be washed, bedspreads or other heavy clothing, it is recommended to avoid spinning.

there In case you need to wash woolen laundry, make sure it is suitable for washing in the washing machine by checking the label of the fabrics.

Useful tips for users

Brief suggestions for using your appliance in compliance environment and with maximum savings.

Load to the **maximum** there **own washing machine**

there To eliminate any waste of energy, water or detergent, it is recommended to use the maximum load capacity of your washing machine. In fact, it is possible to save up to 50% of energy with a full load carried out with a single wash compared to two washes at half load.

When is the pre-wash really needed?

there Only for particularly loads dirty! You save from 5 to 15% of energy by not selecting the prewash option for normally soiled laundry.

Is it necessary to wash at high temperatures?

there The use of stain removers before washing in a washing machine reduces the need for washing at high temperatures.

You can save energy by using a low temperature washing program.

Before using a drying program (SCRUBBER)

there Select a high number of laps first a drying program to reduce residual moisture in the laundry. In this way, considerable SAVINGS of energy and water are obtained.

Below is one **short guide** with tips and recommendations **on the use of detergent at various temperatures**. In any case, always check the instructions on the detergent for correct use and dosage.

For washing with cotton programs at temperatures from 60 ° C upwards heavily soiled resistant whites, it is recommended to use a normal powder detergent (heavy-duty) that contains agents whiteners and that at medium-high temperatures provides excellent performance.

For washes with programs to temperatures between 60 ° C and 40 ° C, the choice of detergent must be made on the basis of the fabric, colors and degree of soiling. In general, for resistant whites with a high degree of soiling, a normal powder detergent is recommended; for colored garments and in the absence of difficult stains, we recommend a liquid or powder detergent suitable for color protection.

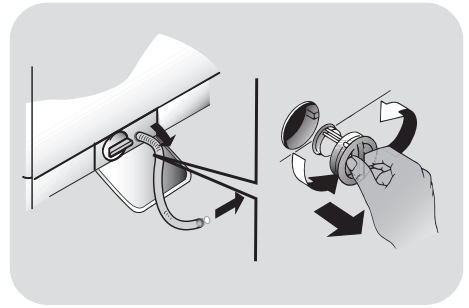
For washing at low temperatures up to 40 ° C, it is advisable to use liquid or powder detergents specific for low temperatures.

For **wool and silk**, use only specific products.

4. CLEANING AND MAINTENANCE ORDINARY

To clean the outside of the washing machine, use a damp cloth, avoiding abrasives, alcohol and / or diluents. The washing machine needs a few precautions for ordinary cleaning: tray cleaning and filter cleaning; here are also suggestions in case of removals or

long periods of machine downtime.



Cleaning the detergent drawer

there It is advisable to clean the detergent drawer to avoid the accumulation of detergent residues and additives.

there To do this, gently pull out the drawer, clean it with a jet of water and reinsert it in its seat.

Filter cleaning

there The washing machine is equipped with a special filter capable of retaining the largest residues that could block the drain, such as buttons or coins.

there **ON SOME MODELS ONLY:** extract the tube, remove the cap and collect the water in a container.

there Before unscrewing the filter, it is advisable place an absorbent cloth under it to prevent residual water from wetting the floor.

there Turn the filter counterclockwise until when stopped, in vertical position.

there Remove the filter and clean it; subsequently reposition it and turn it clockwise.

there Repeat the previous instructions in reverse to reassemble all the elements.

Suggestions in case from removals or periods of inactivity

there In case the washing machine remains in a place that is not heated for a long time, it is necessary to completely empty the pipes of any residual water.

there Unplug the washing machine from the outlet current.

there Detach the hose from the clamp and bring the downwards, emptying the water completely into a basin.

there Finally fix the tube fromI unload the appropriate clamp.

5. QUICK USER GUIDE

This washing machine can automatically adapt the water level to the type and quantity of laundry. This system leads to a decrease in energy consumption and a significant reduction in washing times.

Program selection

there Turn on the washing machine and select the desired program.

there Change the temperature if necessary and press the desired "option" buttons.

DRYING

If you want the drying cycle to start automatically at the end of the wash, select the desired program using the **DRYING SELECTION** button. Otherwise it is possible to finish the wash and subsequently determine the load and the drying program.

there Press the button **START / PAUSE** to start the program.

there At the end of the program, appears on the display the message "End" is displayed or the corresponding LED lights up.

Wait for the DOOR LOCK indicator to go out before opening the door.

there Turn off the washing machine.

For any type of wash, consult the program table and follow the sequence of operations as indicated.

Technical data

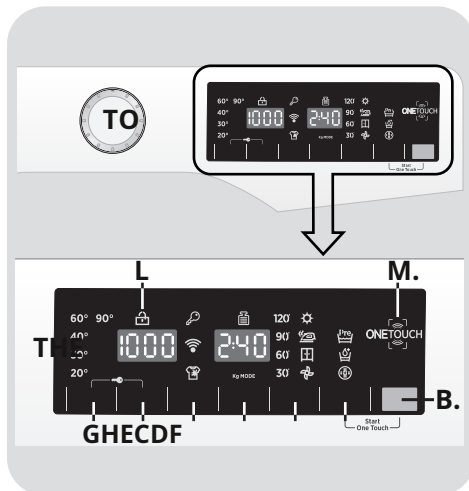
Hydraulic system pressure:

min 0.05 Mpa / max 0.8 Mpa

Spin revolutions: see data plate.

Absorbed Power / Ampere fuse Voltage: see / data plate.

6. COMMANDS E PROGRAMS



A Program knob with OFF position

B START / PAUSE button

C DELAYED START key

D DRYING SELECTION key / STEAM FUNCTION

E QUICK / DIRTY LEVEL button F OPTIONS button

G TEMPERATURE SELECTION key H CENTRIFUGAL SELECTION key F + B

ONE TOUCH start

G + H Key lock

The Displays

L DOOR LOCKED indicator M

ONE TOUCH area



ATTENTION:

Do not touch the display when the plug is inserted because the machine, in the first few seconds, carries out an auto-calibration which could be interrupted: if this happens, the machine may not work optimally. If so, unplug and repeat

the operation.

Program knob with position of OFF

By turning the knob, the display lights up showing the parameters of the selected program.

At the end of the cycle or after a period of inactivity, the brightness of the display decreases to save energy.

NB: To switch off the machine, turn the program knob to the OFF position.

there Press the button **START / PAUSE** to start the washing cycle.

there The washing cycle will take place with the knob programs stops on the program selected until the end of the wash.

there After the display of the message "**End**" on the display and the **DOOR LOCK** indicator goes off, it will be possible to open the door.

there At the end of the cycle, switch off the washing machine by moving the program knob to position **OFF**.

The program knob must always be turned to the OFF position at the end of a wash and before selecting a new one.

START / PAUSE button

Close the door **BEFORE** pressing the **START / PAUSE** button.

there Press to start the cycle set with the program knob.

After starting the washing machine with the START / PAUSE button, you will have to wait a few seconds for the machine to start the program.

ADD OR REMOVE ITEMS AFTER PROGRAM START (PAUSE)

there Press and hold the key **START / PAUSE** for about **2 seconds** (some lights and the indication of the remaining time will flash, indicating that the machine is paused).

there Wait for the light to go out **DOOR LOCKED** before opening the door.

Check that the water level is below the door before opening it, to avoid flooding.

there After adding or removing items, close the door and press the button **START / PAUSE** (the program will restart from the point where it was interrupted).

CANCELING THE SET PROGRAM

there To cancel the program, bring the selector in position **OFF**.

there Wait for **Two minutes** so that the safety device unlocks the door and allows it to be opened.

DELAYED START button

there This key allows you to program the start of the washing cycle with a maximum delay of **24h**.

there To set the delayed start proceed as follows:

- Set the desired program.
- Press the button once to activate it (the display shows **h00**) and press again to set a delay of **1 hour** (appears on the display **h01**). At each subsequent press the delay

set increases by **1 hour** as far as **h24** while with a further pressure yes clears the delayed start.

- Confirm by pressing the key **START / PAUSE** to start counting at the end of which the program will start automatically.

there It is possible to cancel the delayed departure, bringing the knob programs in position **OFF**.

If the power fails while the washing machine is running, a special memory will keep

the setting made and, when the power returns, the machine will restart from where it stopped.

THE keys option must to be selfed before to press the button START / PAUSE.

In case is was selected an option Not compatible with the program chosen, the relative indicator it will flash first and then go out.

DRYING SELECTION key / STEAM FUNCTION

This key allows you to choose between two different options:

- DRYING SELECTION

there **Carry out an automatic cycle of washing / drying:**

after selecting the washing program based on the type of laundry, using this key it will be possible to choose a degree of dryness from those available. At the end of the washing program, the set drying cycle will start automatically.

If you select a washing program incompatible with automatic drying, this button cannot be activated.

The complete cycle can only be carried out with a load of laundry that does not exceed the maximum that can be dried indicated in the program table, otherwise the drying result will not be satisfactory.

there If you want to cancel the selection **first starting the program**, press the button repeatedly until the relative indicator lights go off or return the program selector to the position **OFF**.

there **Carry out only one drying cycle:**

after selecting the most suitable drying program according to the fabrics with the knob, using this key it will be possible to choose a degree of drying different from the preset one (except for the wool drying cycle).

there To cancel the cycle **during the drying**, press and hold the button for approx **3 seconds**.



ATTENTION:

after cancellation of the drying program, a cooling phase will begin and it will be necessary to wait about 10/20 minutes before opening the door.

there After the display of the message "End" on the display and the DOOR LOCK indicator goes off, it will be possible to open the door.

The drying cycle can also be canceled by turning the program knob to the OFF position. It will be necessary to wait for the cooling phase to complete (10/20 minutes) and the DOOR LOCKED light to go off before the door can be opened.

- STEAM FUNCTION

After selecting the program "STEAM", using this button it will be possible to choose between three steam treatments of different intensity, designed for dry or wet garments and according to the type of fabric:

- Synthetic / Mixed Steam *(default selection) P1 appears on the display*

This program is used for synthetics and blends. On wet fabrics (for example, after washing) it is indicated to relax the folds after spinning, on dry fabrics it is designed to reach the ideal humidity level for easier ironing. Average duration.

- Cotton steam *(one press of the key) P2 appears on the display*

This program is recommended for cotton items. On wet fabrics (for example, after washing) it is indicated to relax the creases after spinning, on dry fabrics it is designed to reach the ideal humidity level for easier ironing. Average duration.

- Steam Refresh *(two presses of the key) P3 appears on the display*

Thanks to the help of steam, the cycle allows you to refresh and relax the folds of the garments after use. The program consists of an initial phase in which

the steam acts and a final in which excess moisture is eliminated for immediate use. The cycle is suitable for dry fabrics.

This function is designed for a maximum load of 1.5 kg.

QUICK / DIRT LEVEL button

This key allows you to choose between two different options, depending on the selected program:

- QUICK

The option can be activated when the program is selected **QUICK (14/30/44 Min.)** and allows you to choose one of the three available durations.

- LEVEL OF DIRT

there When selecting a program, it will come automatically the preset washing time for that program is indicated.

there This option allows you to choose between 3 levels of washing intensity, depending on the degree of soiling of the fabrics, by modifying the duration of the selected program (it can be

used only in some programs as shown in the program table).

OPTIONS key

This key allows you to choose between three different options:

- PREWASH

there This option allows you to make a pre-wash and is particularly useful for heavily soiled laundry (it can only be used in some programs as shown in the program table).

there It is recommended to use only 20% of the recommended amount on the detergent package.

- AQUAPLUS

there This option (available only in some programs) allows you to wash the laundry in a greater quantity of water and this, with the new combined action of rotation cycles of the drum with water loading and unloading, allows to obtain garments perfectly clean and rinsed, obtaining the perfect dissolution of the detergent and guaranteeing an effective cleaning action.

there This function has been studied specially for people with delicate and sensitive skin, for whom even a small residue of detergent can cause irritation or allergies.

there It is recommended that you use this function also for children's garments and heavily soiled fabrics, for which it is necessary to use more detergent, or when washing terry cloth items whose fibers tend to retain the detergent more.

- HYGIENE +

It can only be activated when at least 60 ° C is set, this option allows you to sanitize the laundry, keeping the temperature constant during the entire washing phase.

TEMPERATURE SELECTION key

there This key allows you to change the temperature of the washing cycles.

there For the safeguard of the tissues, it is not possible to increase the temperature beyond the maximum foreseen for each program.

there If you want to run a cold wash the lights must all be off.

SPIN SELECTION button

there By pressing this button, you can reduce the maximum spin speed possible for the selected program, up to its complete exclusion.

there ^{Self} the label Not reports any indication it is possible to spin at the maximum speed foreseen by the program.

To protect the fabrics, it is not possible to increase the speed beyond the maximum set for each program.

there To reactivate the centrifuge, it is enough press the button again until the selected speed is reached.

there You can change the speed of the spin at any time, even without bringing the machine to **PAUSE**.

An overdose of detergent can cause excessive foaming. If the washing machine detects too much foam, it can exclude the spin cycle or extend the program duration and increase the water consumption.

The model is equipped with a particular electronic device that prevents the centrifuge from starting with particularly unbalanced loads. This serves to reduce vibrations and improve silence, while safeguarding durability washing machine.

START ONE TOUCH

Simultaneous pressing of the keys **START / PAUSE** And **OPTIONS** allows the program transferred via to start Location app **One Touch**, previously selected via program knob (see the appropriate section of this manual).

KEY LOCK

there Simultaneous pressing of the keys

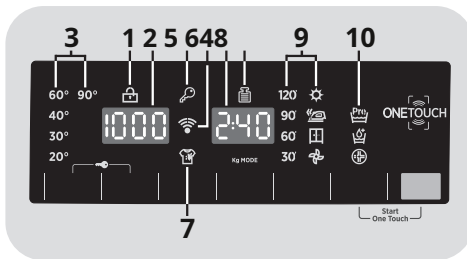
TEMPERATURE SELECTION And CENTRIFUGAL SELECTION

for about **3 seconds** allows you to lock the keys. This way, you can prevent unwanted or accidental changes from being made.

there The key lock can be canceled, simply by pressing the two activation keys again or turning off the appliance.

Display

The display signaling system allows you to be constantly informed about the operation of the appliance.



1) DOOR LOCKED LIGHT

there The light indicates that the door is closed.

Close the door BEFORE pressing the START / PAUSE button.

there After pressing the key **START / PAUSE**, initially the light flashes and then becomes steady until the end of the wash.

If the door is not closed correctly, the light will continue to flash for about 7 seconds, after which the start command will be automatically canceled. In such

**case, close properly
And to press again
START / PAUSE.**

the porthole
the key

there Wait for the light to go out
DOOR LOCKED before opening the door.

2) CENTRIFUGAL REVOLUTIONS

Indicates the spin speed of the selected program which can be varied or canceled using the appropriate button.

3) TEMPERATURE SELECTION LIGHTS

They indicate the washing temperature of the selected program which can be changed (where provided) using the relative button. If you want to carry out a cold wash program, the lights must all be off.

4) CYCLE DURATION

there When selecting a program, it will come automatically indicated the duration of the cycle which may vary according to the options that will be selected.

there After the program has started, the display will show you will keep constantly informed about the remaining time at the end of the wash.

there The device calculates this time based on to a standard load, but during the cycle the machine corrects the time according to the volume and composition of the load.

5) KEY LOCK LIGHT

Indicates that the keys have been locked.

6) Wi-Fi (some models only)

there In models equipped with the Wi-Fi function, ne indicates operation.

there For all information relating to features and instructions for easy Wi-Fi setup, please refer to the "**Download**" of the site

<http://wizardservice.candy-hoover.com>.

7) DIRT LEVEL INDICATOR

Indicates the selection of the relevant option.

8) Kg MODE (*active only in some programs*)

there During the first few minutes of operation the indicator light " **Kg MODE** " remains on while the machine calculates the time remaining at the end of the cycle, based on the quantity of laundry actually introduced into the drum.

there " **Kg MODE** " allows you to measure during all the washing phases, a series of information on the laundry inserted inside the drum and in the first minutes of the washing cycle:

- regulates the amount of water needed;
- determines the duration of the wash;
- adjusts the rinses according to the load and the type of laundry you have chosen to wash;
- adjusts the rotation rhythm of the basket to adapt it to the type of fabric;
- recognizes the presence of foam, possibly increasing the water level during rinsing;
- adjusts the number of revolutions of the centrifuge according to the load, avoiding any imbalances.

9) DRYING SELECTION LIGHTS

The lights indicate the degrees of drying that can be selected using the appropriate button:

Automatic drying programs



EXTRA DRY

(recommended for sponges, bathrobes and bulky loads).



READY IRON

(which leaves the linen ready for ironing).



READY WARDROBE

(for garments that do not need to be ironed).

Timed programs



They can be used to set timed drying programs.

Cooling phase



It lights up in the final cooling phase, in the last 10/20 minutes of each drying.

10) OPTION LIGHTS

They indicate the options that can be selected using the appropriate key.



ONE TOUCH

This appliance is equipped with technology **One Touch** which allows you to interact, via App, with smartphones based on the Android operating system and equipped with the NFC (Near Field Communication) function.

there Download the App **Hoover Wizard** on the your smartphone.

The App Hoover Wizard it is available for both devices with Android and iOS operating systems, both for tablets and smartphones; however, it is possible to interact with the machine and exploit the potential offered by One Touch only with Android smartphones equipped with NFC technology, according to the following scheme:

Android smartphone with NFC technology	Interaction with the machine + content
Android smartphone without NFC technology	Content only
Android tablet	Content only
Apple iPhone	Content only
Apple iPad	Content only

The management and control of the machine via the App takes place only "by proximity": it is therefore not possible to perform an operation remotely (eg: from another room, outside the home).

FUNCTIONS

The main functions that can be activated through the App are:

there **Voice Coach** - Guide to choosing the ideal cycle by entering three voice inputs (garments / fabrics, color, degree of soiling).

there **Programs** - Ability to download and start new washing programs.

there **Clever Care** - Clever Check-up, Auto-Hygiene cycles and troubleshooting guide.

there **Reports** - Washing statistics and suggestions for more efficient use of the machine.

To find out all the details of the One Touch functions, explore the menus by accessing DEMO mode or go to:

www.hooveronetouch.com

HOW TO USE ONE TOUCH

FIRST TIME - Machine registration on App

there Access the menu "**Settings**" of the your Android smartphone and activate the NFC function within "**Wireless and Networks**".

In relation to the template of the smartphone used and the version of the Android operating system, the process of activating the NFC function may be different. Consult the relevant manual for more details.

there Turn the knob to the position **One Touch** to enable the sensor on the dashboard.

there Open the App, create the user profile and register the appliance following the instructions on the telephone display or the procedure described in "**Quick Guide**" attached to the machine.

Further information, FAQs and video for easy product registration are available at:

www.hooveronetouch.com/how-to

SUBSEQUENT TIMES - Usual use

there Whenever you intend to operate with the App on the machine, you must first enable the mode **One Touch** rotating the knob in the homonymous position.

there Make sure you have unlocked the screen phone (switched on and without code) and the NFC function activated; if not, follow the procedure described above.

there If you want to start a wash cycle, load the laundry, detergent e close the door.

there To select the function desired on the App (e.g. starting a program, Clever Check-up, update statistics, etc ...).

there Follow the instructions on the display of the phone, **SUPPORTING IT** to the logo **One Touch** here indicated by The App.



there For to boot again a cycle transferred on **One Touch**, rotate the knob on the homonymous position and press the buttons at the same time **START / PAUSE** And **OPTIONS**, like indicated on the dashboard.

NOTE:

Position the smartphone so that the NFC antenna on the back of the smartphone is in correspondence with the One Touch logo on the dashboard of the car.



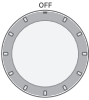


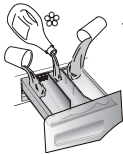

If you do not know the position of the NFC antenna, move the smartphone slightly in a circular motion on the One Touch logo until the App signals successful connection. For the data transfer to be successful it is essential to KEEP THE PHONE PLACED ON THE DASHBOARD DURING THE WHOLE PROCEDURE (a few seconds); a

screen on the device will inform you about the outcome of the operation and when it will be possible to move the smartphone away.

Thick cases or metal stickers on the smartphone may affect or prevent data transmission between the machine and the phone. If necessary, remove them.

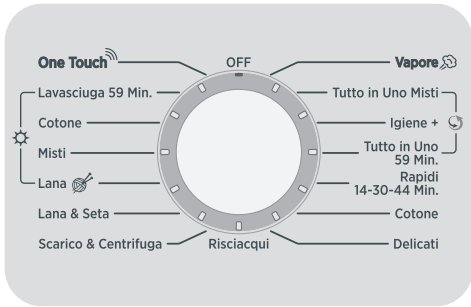
The replacement of some components of the smartphone (ex: back cover, battery, etc ...) with non-original ones, could involve the removal of the NFC antenna, preventing the complete use of the App.

Tabella programs

 PROGRAM	 (MAX.) * (refer to the dashboard)										 °C (MAX.) 2											
	6+4 kg	6+5 kg	7+5 kg	8+5 kg	8+6 kg	9+6 kg	10+6 kg	10+7 kg														
Steam 	1.5	1,5	1,5	1,5	1,5	1,5	1,5	1,5			-											
NS or in One Misti	2) 4)	3	3	3	5	4	4	4	5	5	40 °	●	●									
Hygiene +	4)	4	4	4	5	5	5	5	6	6	6	5	6	7	8	8	9	10	60 °	●	●	
All in One 59 Min.	4)	6	10								40 °	●	●									
Quick 3) 4) 14-30-44 Min.	14 '	1	1	1	1,5	1,5	1,5	1,5	1,5	1,5	30 °	●	●									
	30 '	2	2	2	2	2	2	2	2	2	30 °	●	●									
	44 '	3	3	3	3	3	3	3	3	3	40 °	●	●									
Cotton**	2) 4)	6	6	7	8	8	9	10	10		90 °	●	●	(●)								
Delicates		2	2	2	2	2	2	2	2	2	40 °	●	●									
Rinses		-	-	-	-	-	-	-	-	-	-	△	●									
Drain & Spin		-	-	-	-	-	-	-	-	-	-											
Wool silk		1	1	1	2	2	2	2	2		30 °	●	●									
Wool (drying)		1	1	1	1	1	1	1	1		-											
Mixed (drying)		3	3	3	3	4	4	4	5	5	-											
Cotton (drying)		4	5	5	5	6	6	6	7		-											
Washer dryer 59 Min.		1.5	1,5	1,5	1,5	1,5	1,5	1,5	1,5	1,5	-	●										

One Touch 

"Rewritable" position of the knob to be selected to interact with the smartphone App and transfer the download cycles (refer to the dedicated paragraph). The Auto-Hygiene cycle is loaded in the factory, designed to sanitize the machine.



Notes to consider

* The maximum load capacity of dry laundry differs depending on the model (refer to the dashboard).

▲ (Only for models equipped with a basin for liquid detergent)

When only some items have stains that require treatment with liquid bleaching products, a preliminary stain removal can be carried out in the washing machine.

Introduce in the compartment "2" detergent drawer in the special compartment supplied in which to pour the bleach and set the RINSE program. All done this treatment, report the program knob in the OFF position, add the rest of the laundry to the bleached items and proceed to normal laundry with the most suitable program.

● Only with the PREWASH option selected (programs with the PREWASH option available).

1) When you select a program, the display shows the recommended temperature which can be changed (where provided) using the relative button, but cannot be increased beyond the maximum set.

2) For the programs indicated it is possible, using the DIRT LEVEL button, to adjust the washing time and intensity.

3) By selecting the QUICK program from the program knob and pressing the QUICK button, it will be possible to select one of the 3 rapid programs available, namely 14 ', 30' and 44 '.

4) Programs enabled for automatic drying.

INFORMATION FOR LABORATORIES TEST (EN 50229 STANDARD)

Washing

Use the ** program selecting the maximum level of dirt, maximum spin speed and a temperature of 60 ° C.

Recommended program also for comparative tests at lower temperatures.

Drying

First drying carried out with **A kg**

(composition of linen load: pillowcases and towels) by selecting the cotton drying program () ready wardrobe ().

Second drying carried out with

B kg (composition of linen load: sheets and towels) by selecting the cotton drying program () ready wardrobe ().

Capacity (wash) (kg)	TO (kg)	B (kg)
	Before drying	Second drying
6	4	2
6	5	1
7	5	2
8	5	3
8	6	2
9	6	3
10	6	4
10	7	3

Program selection

To treat the various types of fabric and the various degrees of dirt, the washing machine is equipped with specific programs, suitable for every washing need (see program table).

WASH

Steam

This program uses a steam treatment that relaxes the folds and achieves the ideal degree of humidity for easier ironing. Through the appropriate button it will be possible to select three levels of different intensity, designed for dry or wet garments and according to the type of fabric.

ALL IN ONE technology

The washing machine is equipped with an innovative washing system: using a high pressure jet, a mixture of water and detergent is placed directly on the garments. Thanks to the special motor, at the beginning of each program the cycle foresees movements of the drum that help the detergent solution to penetrate into the fabrics, favoring the removal of dirt and guaranteeing the best washing performance. The system **ALL IN ONE** it is also used during the water filling phase, during which the high pressure jet helps to completely remove detergent residues from the laundry.

All in One Mixed

This program allows you to wash laundry of different colors and fabrics together. Washing and rinsing are optimized in terms of drum rotation and water levels. The delicate action centrifuge ensures a reduced formation of creases on the fabrics. Thanks to technology **ALL IN ONE**, an optimization of the washing is obtained.

WARNINGS:

there The first wash of new colored garments must be done separately.

there Voluminous dark garments such as jeans and towels should be washed separately.

there In any case, never mix CAPI COLORFUL STRINGS.

Hygiene +

This program guarantees deep cleaning, an effective sanitizing and anti-allergic action thanks to an optimized cycle in terms of temperature and rinsing, eliminating allergens and detergent residues. Ideal for sensitive skin. It is suitable for cotton garments, has a temperature of 60 ° C and is recommended for a small load.

All in One 59 Min.

This program allows you to wash fabrics such as cotton, synthetics and blends in just 59 minutes, at full load and at 40 ° C (or less) and is particularly suitable for lightly soiled garments.

Quick (14-30-44 Min.)

Recommended washing cycle for lightly soiled small loads. With this program it is recommended to reduce the detergent normally used to avoid unnecessary waste. By selecting the RAPID program and pressing the relative key, it is possible to choose one of the 3 rapid programs available.

Cotton

This program is suitable for washing normally soiled cotton garments and is the most efficient in terms of combined water and energy consumption for washing cotton laundry.

Delicates

This program alternates moments of work with moments of pause and is particularly suitable for washing very delicate fabrics. Washing and rinsing are performed with a high level of water to ensure the best performance.

Rinses

This program carries out 3 rinses of the laundry with intermediate spin (possibly reducible or cancelable using the appropriate button). It can be used to rinse any type of fabric, for example after washing by hand.

Drain & Spin

Through this program the machine will directly drain the water and spin at high speed. If you want to drain only or reduce the intensity of the spin, simply press the SPIN SELECTION key.

Wool silk

This program performs a delicate washing cycle, particularly suitable for "Machine washable wool" garments or for machine washable silk garments.

DRYING



ATTENTION:

Before starting a drying program, the containers for concentrated powder or liquid detergents must be removed from the drum.

The drum changes direction during drying cycles to prevent the laundry from tangling, increasing the drying effect. During the last 10/20 minutes of the drying cycle, fresh air is used to minimize creases in the laundry.

Wool

Low temperature drying program, ideal for drying woolen garments with the utmost delicacy and care, avoiding felting and deformation. It is advisable to turn the garments inside out before drying them. The time may vary depending on the size and density of the load and the spin cycle chosen for washing. Suitable for small loads of

max 1 kg (about 3 sweaters).

Mixed

Program from drying to low temperature, recommended for mixed fabrics (synthetics / cotton) and synthetics (always refer to the fabric labels).

Cotton

Program from drying to high temperature, recommended for fabrics of cotton, terry, linen, hemp (always refer to the fabric labels).

Washer dryer 59 Min.

A complete washing and rapid drying program lasting about 59'. It is ideal for obtaining clean and dry garments that we want to wear immediately. Suitable for small loads of max 1.5 kg (for example 4 shirts) or for lightly soiled garments (cotton and blends). With this program we recommend reducing the detergent dose (compared to the normal one) to avoid wasting it.

ONE TOUCH

One Touch

"Rewritable" position of the knob to be selected each time you want to transfer a command from the App to the machine and to download and / or start a download cycle (for details on the functions that can be activated, refer to the dedicated paragraph and the instructions on the App). Factory location

One Touch is written with the loop **"Self-Hygiene"**, designed to sanitize the drum, remove bad odors and ensure long life for the washing machine. The program must be run with the machine empty, using only powder detergent and taking care to leave the door open at the end to dry the drum. Recommended every 50 washes.

7. DRYING CYCLE





there The indications provided are general, it will be some practice is required for drying to work properly.

there It is recommended to set times at the beginning lower than those recommended, in order to determine the degree of drying desired.

there Yes advises from Not to dry frequently lint-free fabrics, like rugs or long-haired items, so as not to clog the air ducts.

there It is advisable to group the laundry with the following methods:

- Based on the symbols found on the fabric labels

-  Drying allowed.
-  Drying allowed even at high temperatures.
-  Drying allowed alone to moderate temperature.
-  Drying **NOT ALLOWED**.

Self the garments do not have the label of the fabrics, it is assumed that they are not suitable for drying in the washer-dryer.

- Based on size and thickness

Whenever the washing load is larger than the drying capacity, it is recommended to separate the clothes according to their volume (e.g. towels from light laundry).

- According to the type of fabric

Cotton / linen: towels, t-shirts, tablecloths and sheets.

Synthetics: blouses, shirts, suits, etc ... made of polyester or polyamide, like that as for cotton / synthetic blends.

there To dry alone linen already centrifuged.

The correct way d i dry

there Open the door.

there Fill the basket, not exceeding the load maximum dryable laundry indicated in the program table. In the case of large items (eg sheets), or very absorbent (eg bathrobes or jeans) it is advisable to reduce the amount of linen.

there Close the door.

there Turn the program knob to drying program best suited to the laundry loaded.

there With the washer-dryer you can do the following types of drying:



- Drying program a **low temperature**, recommended for wool fabrics.





- Drying program a **low temperature**, recommended for mixed fabrics (synthetics / cotton) and synthetics.




- Drying program ad **high temperature**, recommended for cotton, terry, linen, hemp fabrics.

there Select the degree of dryness desired:

 **EXTRA DRY**
(recommended for sponges, bathrobes and bulky loads).

 **READY IRON**
(which leaves the linen ready for ironing).


 **READY WARDROBE**
(for garments that do not need to be ironed).

there If you want to set a drying to **weather**, press the button **DRYING SELECTION** until the ignition is turned on indicator light corresponding at the duration desired.

By selecting the wool drying program, it will not be possible to select a degree of drying other than the preset one.

there The washer dryer will calculate based on the load and the type of drying selected, the required drying time and the desired degree of residual humidity.

there Make sure the water tap is open and that the drain is in a regular position.

 **ATTENTION:**
do not dry items with special padding (duvets, anoraks, etc ...) very delicate items.

If the garments are washed and worn, it is a good idea to further reduce the load to avoid creasing.

there Press the key **START / PAUSE** (on the the display will show the remaining drying time).

The device calculates this time based on a standard load, but during the cycle the machine corrects the time according to the volume and composition of the load.

IT

During the drying phase, the drum rotates at high speed to balance the load and optimize the cycle.

there The drying program indicator will remain on until the cooling which will be signaled when the relative warning light comes on.

there At the end of the program comes on the display the message " **End** ". After **5 minutes** the appliance will go into standby (in some models two lines will be displayed).


there Switch off the washing machine by bringing the program knob in position **OFF**.

there Open the door and remove the laundry.

there Close the water tap.

CANCELING THE DRYING PROGRAM

there To cancel the program from drying, press and hold the button **DRYING SELECTION** for about **3 seconds**.

 **ATTENTION:**
after cancellation of the drying program, a cooling phase will begin and it will be necessary to wait about 10/20 minutes before opening the door.

For a correct functioning of the appliance it is preferable not to interrupt the drying phase if not really necessary.

8. AUTOMATIC WASHING / DRYING CYCLE

The complete cycle can only be carried out with a load of laundry that does not exceed the maximum that can be dried indicated in the program table, otherwise the drying result will not be satisfactory.

- Wash

there Open the drawer and add the detergent in the special compartments.

there Consult the table of programs and, in accordance to the fabrics to be washed, turn the program knob to select the desired one.


there Change the temperature if necessary washing.


there Press the option keys (if desired).


there Make sure the water tap is open and that the drain is in a regular position.

- Drying

there Select the degree of dryness desired:

 **EXTRA DRY**
(recommended for sponges, bathrobes and bulky loads).

 **READY IRON**
(which leaves the linen ready for ironing).

 **READY WARDROBE**
(for garments that do not need to be ironed).

By selecting the wool program, it will be available alone the degree from default drying.

there If you want to set a drying to **weather**, press the button **DRYING SELECTION** until the ignition is turned on indicator light corresponding at the duration desired.

there Press the key **START / PAUSE**.

there At the end of the washing phase, on the display will show the remaining time drying ature.

there The spy of the drying program on up to will remain phase cooling which will be signaled when the relative warning light comes on.

there At the end of the program, will appear on the display the message " **End** ". After **5 minutes** the appliance will go into standby (in some models two lines will be displayed).

there Switch off the washing machine by bringing the program knob in position **OFF**.

there Open the door and remove the laundry.

there Close the water tap.

CANCELING THE DRYING PROGRAM

there To cancel the program from drying, press and hold the button **DRYING SELECTION** for about **3 seconds**.



ATTENTION:

after cancellation of the drying program, a cooling phase will begin and it will be necessary to wait about 10/20 minutes before opening the door.

For a correct functioning of the appliance it is preferable not to interrupt the drying phase if not really necessary.

9. TROUBLESHOOTING AND WARRANTY

If you think that the washing machine is not working properly, consult the short guide below, with some practical suggestions to solve the most common problems.



ONLY FOR MODELS EQUIPPED WITH ONE TOUCH TECHNOLOGY Thanks to the **Clever Check-up cycle** within the App *Hoover Wizard* and with an **Android smartphone** equipped with **NFC technology**, it is possible to check the correct functioning of the machine at any time. More details on the App.

In the event of an error on the machine display (signaled by a code or flashing of the lights), by opening the App and bringing the Android smartphone equipped with NFC near the One Touch logo on the dashboard, it is possible to start the troubleshooting guide.

ERROR REPORTING

there **Models with display**: errors will be displayed by a number preceded by an "E" (example: Error 2 = E2).

there **Models without display**: errors will be indicated by all the lights flashing for a number of times equal to the error code, followed by a pause of 5 seconds (example: Error 2 = 2 flashes, pause of 5 seconds, 2 flashes, etc...).

<i>Error displayed</i>	Meaning and solutions
<i>E2 (with display) 2 flashes of the lights (without display)</i>	The machine does not fill with water.
	Check that the water tap is open.
	Make sure the inlet hose is not kinked or squashed.
	Drain pipe not at the correct height (see installation section).
	Turn off the tap, unscrew the inlet hose from the back of the washing machine and check that the "anti-sand" filter is not clogged.
<i>E3 (with display) 3 flashes of the lights (without display)</i>	The machine does not drain the water.
	Check that the filter is not clogged.
	Make sure the drain hose is not kinked, squashed or blocked.
	Check that the wall drainage system is not clogged by trying to drain the machine into the sink.
<i>E4 (with display) 4 flashes of the lights (without display)</i>	The machine has detected excessive foam and / or water.
	Check that you have not used excessive doses of detergent or a product not suitable for washing in the washing machine.
<i>E7 (with display) 7 flashes of the lights (without display)</i>	Porthole problem.
	Check that the door is closed correctly. Make sure that there are no cloths inside the drum that could obstruct its closing.
	If the door is locked, unplug it and wait 2-3 minutes before trying to open it again.
<i>Any other code of error</i>	Turn off the washing machine, unplug it and wait one minute. Turn the machine back on and start a program. If the error occurs again, contact an Authorized Technical Assistance Center, communicating the error displayed.

OTHER ANOMALIES

Problem	Possible causes and practical solutions
<p><i>There washing machine</i> Not works / does not start</p>	<p>Check that the plug is inserted correctly. Check that there is no power failure.</p> <p>Check that the outlet is working by testing it with another appliance such as a lamp.</p> <p>Check that the door is closed correctly.</p> <p>Check that you have correctly selected and started the washing program.</p> <p>Make sure the machine has not been mistakenly paused.</p>
<p>There is water on the floor near the <i>washing machine</i></p>	<p>It is possible that it is due to a leak from the gasket placed between the tap and the filling pipe. Check the correct tightening of the pipe and replace the gasket if necessary.</p> <p>Make sure the filter is closed properly.</p>
<p><i>The washing machine</i> Not centrifuge</p>	<p>In some conditions of non-optimal arrangement of the laundry in the drum, the washing machine could:</p> <ul style="list-style-type: none"> • Increase the run time of the centrifuge in an attempt to homogeneously redistribute the load. • Lower the spin speed to reduce vibrations and improve silence. • Exclude the spin cycle to preserve the life of the washing machine. <p>Make sure that the load is distributed evenly; if not, replace it and restart the machine.</p> <p>It could be that the water has not yet been completely drained - wait a few minutes. If the problem persists, see Error 3 description.</p> <p>In some models, there is the "no spin" function: check that it has not been activated.</p> <p>Verify that no options have been selected that affect the spin cycle.</p> <p>Excessive use of detergent can prevent spinning: reduce the quantity for subsequent washes.</p>
<p>Yes feel vibration / noise during the spin cycle <i>strong</i></p>	<p>The washing machine may not be completely level: if so, adjust the feet as indicated in the appropriate section.</p> <p>Check that you have unpacked the machine correctly by removing all the screws, rubber pads and spacers on the back of the machine.</p> <p>Make sure there are no foreign bodies in the basket (coins, zippers, buttons, etc...).</p>

The conventional warranty covers electrical and / or mechanical defects of the product attributable to an action or omission by the manufacturer.
If a defect found is attributable to external factors, incorrect use, incorrect installation or failure to comply with what is stated in the instructions for use, the costs for any repairs will be borne by the customer.



The use of ecological phosphate-free detergents can produce the following effects:

- **more cloudy waste water from rinses:** it is an effect linked to the presence of suspended zeolites that does not have negative effects on the effectiveness of the rinse.

- **presence of white powder (zeolites) on the laundry after washing:** it is a normal effect, the dust does not incorporate into the fabrics and will not alter their color. To remove it, perform a rinse cycle. Try using less

detergent for future washes.

- **presence of the last Flushing:** **from foam** it is not necessarily index of a villain **in water** Flushing. Try using less detergent for future washes.

- **conspicuous foaming:** it is often due to the anionic surfactants present in the detergent formulation which are difficult to remove from the laundry itself.

In these cases, it is not necessary to perform multiple rinse cycles to eliminate these effects: no benefit will be obtained.

If the problem persists or if you think there is a malfunction, immediately contact our Authorized Technical Assistance Center.

It is advisable to always use original spare parts, available at our Authorized Technical Assistance Centers.

Warranty

The product is guaranteed, as well as in accordance with the law, under the conditions and terms indicated on the conventional guarantee certificate included in the product. The certificate must be kept and shown to our Authorized Technical Assistance Center, if necessary, together with the receipt proving the purchase of the appliance. You can also consult the warranty conditions on our website.

To obtain assistance, fill out the appropriate online form or contact us at the number indicated on the assistance page of our website.

The manufacturer declines all responsibility for any printing errors contained in the booklet included in this product. It also reserves the right to make any changes that will be useful to its products without compromising the essential characteristics.

fkhdsk

fkhdsk

